



FEBS advanced practical course

State-of-the-art infection models to study molecular mechanisms of human fungal infections

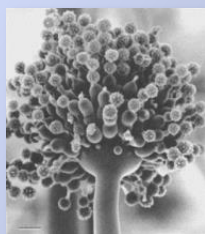
February 14 – 27, 2016 ■ Jena, Germany

Deadline for application: October 15, 2015

Please visit www.febs-infection-models.org for detailed information

Limited to 20 participants ■ FEBS Youth Travel Funds available

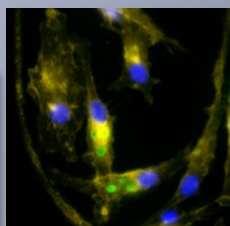
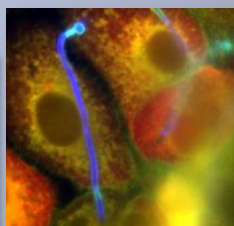
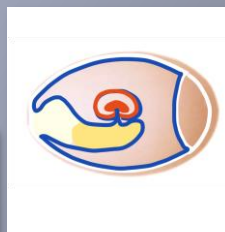
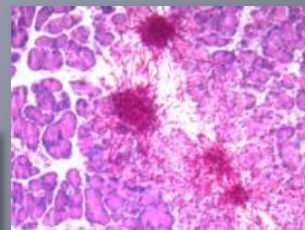
Topics



Aspergillus fumigatus



Candida albicans



In vivo

Ex vivo / in vitro

Functional analysis

Fungal-host interaction

Alternative infection models

Invited speakers

Judy Berman

Tel Aviv University, Israel

Agostinho Carvalho

University of Minho, Portugal

Thilo Figge

HKI, Jena

Attila Gaçser

University of Szeged, Hungary

Joe Heitman

Duke University, USA

Christian Hertweck

HKI, Germany

Deb Hogan

Geisel School of Medicine, USA

Donna M. MacCallum

University of Aberdeen, UK

Robin May

University of Birmingham, UK

Patrick Van Dijck

K.U. Leuven, Belgium



Organizing team:

Ilse D. Jacobsen (Hans Knöll Institute Jena)

Bernhard Hube (Hans Knöll Institute Jena)

Patrick Van Dijck (VIB, K.U. Leuven)

